

# **news**

**INCLUDING  
PLANT LIST**

SPRING 05

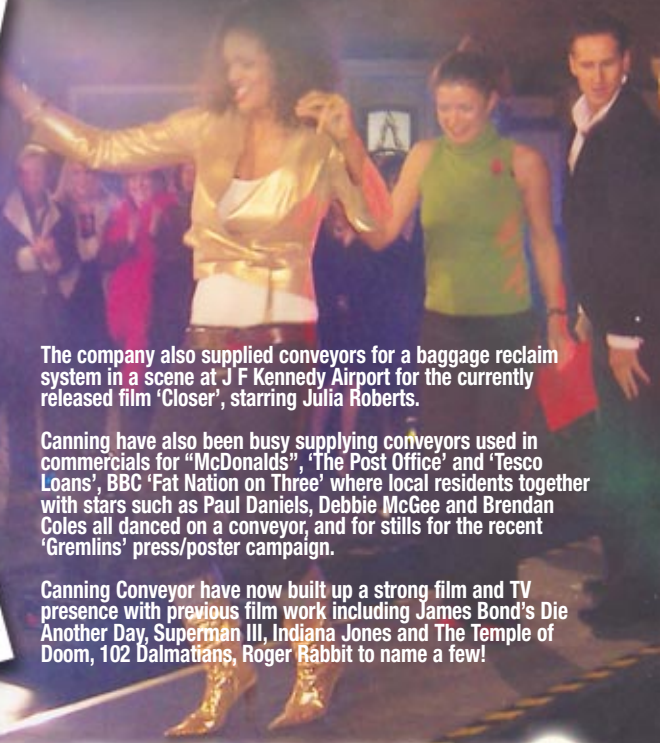
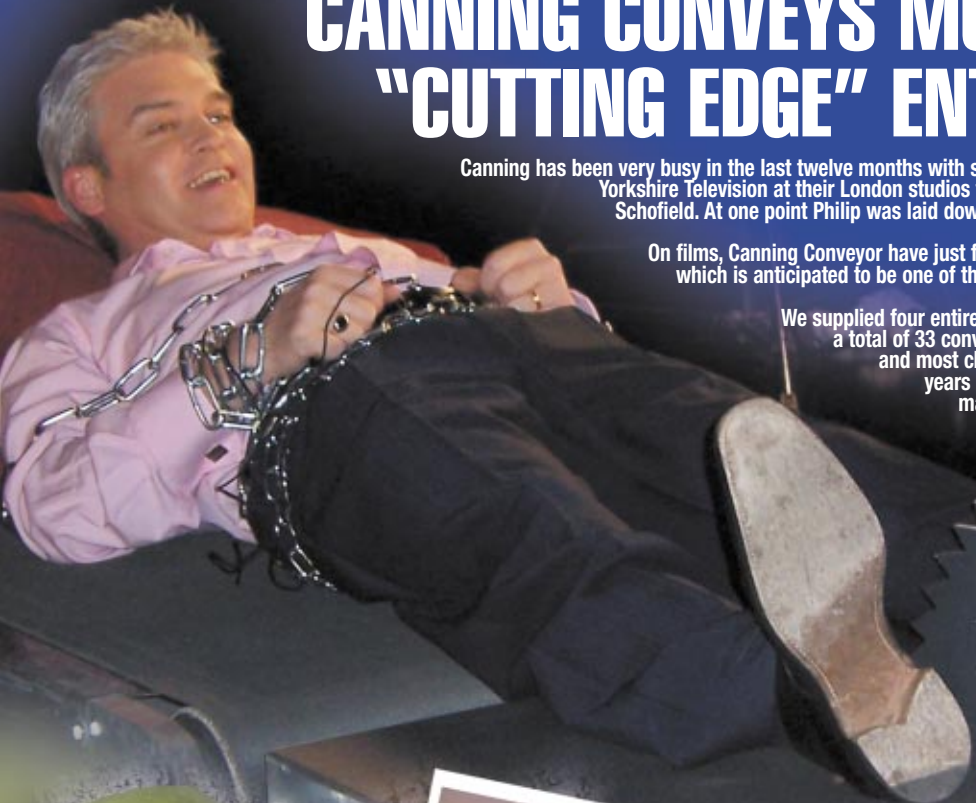
## CANNING CONVEYS MORE "CUTTING EDGE" ENTERTAINMENT

Canning has been very busy in the last twelve months with several film and TV projects. They have been involved with Yorkshire Television at their London studios filming "Best Ever Hidden Camera Stunts 5", starring Philip Schofield. At one point Philip was laid down on the conveyor and faced a mock-up of a circular saw!

On films, Canning Conveyor have just finished the supply of all the conveyors for a major blockbuster, which is anticipated to be one of the hottest films to come out this year!

We supplied four entirely different conveyor systems on four separate sets, comprising a total of 33 conveyors, said MD Andrew Canning. "This was by far the biggest and most challenging project we have ever been involved in over the past 23 years of our film activities, the conveyors were an essential part in the making of this film."

Details of our involvement in the film will appear in our next issue of Newsline!



The company also supplied conveyors for a baggage reclaim system in a scene at J F Kennedy Airport for the currently released film 'Closer', starring Julia Roberts.

Canning have also been busy supplying conveyors used in commercials for "McDonalds", 'The Post Office' and 'Tesco Loans', BBC 'Fat Nation on Three' where local residents together with stars such as Paul Daniels, Debbie McGee and Brendan Coles all danced on a conveyor, and for stills for the recent 'Gremlins' press/poster campaign.

Canning Conveyor have now built up a strong film and TV presence with previous film work including James Bond's Die Another Day, Superman III, Indiana Jones and The Temple of Doom, 102 Dalmatians, Roger Rabbit to name a few!

[www.canningconveyor.co.uk](http://www.canningconveyor.co.uk)

- Canning Conveyor Products
- Cannoflex Standard Conveyor Belting
- Cannoflex Chevron Belting
- Second Hand Conveyor Belting
- Conveyor Belt Fasteners
- Vulcanising
- Mobile Conveyors
- Lattice Frame Conveyors
- Feeders and Hoppers
- Conveyor Drums
- Idlers and Rollers
- New Replacement Rollers
- Field Conveyor Suspended Idlers & Rollers
- Canning Modular Conveyor C.M.C
- Field Conveyor Structure
- Slide Lagging
- Elevator Belts
- Wear Resistant Rubber
- Belt Reeling Machines
- Canning Conveyor Products



## CANNING COMPLETE SECOND PHASE OF THORNLEY DIGESTER

Opened in January 2002, the ciVic® Municipal Waste Aerobic Digester based at Thornley, County Durham was built as a pilot project. Opened by the Prime Minister the project's main aim was to transform household rubbish that would otherwise go directly to landfill, into useable composted soil improving media and separate out recyclable bi-products such as aluminium, steel, glass and plastics.

Originally funded by County Durham Environmental Trust (CDENT), the research and development initiative, it represented a major response to the governments challenge to increase the allocation of funds to sustainable waste management projects. It was constructed by Civic Environmental Systems Limited (CES) of Sheffield and operated under contract by CDAD by Premier Waste Management Ltd (Premier). The second phase of the development was funded by Premier.

From the outset there was always the intention to develop the plant through phases, the throughput of the original pilot plant was licensed at 8000 tonnes/annum being limited by license conditions; following the proven reliability and performance of the plant the second phase was licensed for an increased throughput of 25,000 tonnes/annum. To date the plant has cost in excess of £4 million and will change from development status to becoming a total commercial operation from April 2005. As a result of the success of this pilot plant, CES are now involved in a number of other projects; two of which are for Premier, which are in an advanced stage.

Canning Conveyor Co Ltd who originally supplied the complete conveyor equipment

for the original plant, were again awarded the contract for the supply of the second phase conveying equipment by Civic Environmental Systems Ltd.

Canning Conveyor were responsible for undertaking the full design, manufacture and installation of the conveyors for the transportation of both shredded raw, and digested municipal solid waste (MSW) within the second phase of the system.

The patented ciVic® process takes raw, unsorted waste from domestic households; it is fed into a low speed, high torque shredder that cuts the waste into small pieces. The second phase of the project includes additional handling facilities and, a second digester tower. It is the digester tower that is the most integral and advanced part of the process. The tower works on the process of aerobic digestion and allows full control over each batch of material being processed. The process is fully computer controlled requiring manual input and has bespoke data acquisition system, which allows full traceability of all material batches processed, thereby giving assurance that the material is fully sanitised and pathogen free.

Canning supplied an inclined gantry feed conveyor 1800mm wide x 56.5m long which accepts waste directly from the shredder, this conveyor discharges onto a channel frame transfer conveyor 1800mm x 5m long which delivers the waste stream onto a reversible transfer conveyor and then into the reception hatch of either the first or second digester tower.

The discharged material from the bottom of each tower is then fed via auger onto an a vibratory feeder and subsequently onto an inclined lattice conveyor 1800mm x 20.7 m



long which feeds directly into a trommel. After screening, the material is then discharged onto three 750mm x 14.5m long out loading radial conveyors which discharge into reception trailers. All the conveyors have a capacity of 50 tph and are fitted with standard Canning conveyor parts; the main feed and transfer conveyors were fitted with Cannoflex nitrile conveyor belts.

Karl Shaw, manager of Civic Environmental Systems Limited comments: "Canning Conveyor Co Ltd have worked closely with us on both phases of this development to provide belt conveying systems which form an integral part of the ciVic® process. The equipment and levels of service supplied by Canning have been to specification and extremely professional. We look forward to working with Canning on future installations."

# CONVEYING QUALITY – ISO 9001:2000



Rick Hursthouse (Manager IMSM) and Geoff Read (Certified Head Auditor) presenting Andrew Canning and staff members with the ISO 9001:2000 Certificate.

Since its foundation in 1965, our family firm has been committed to the philosophy of supplying the best possible equipment at the fairest price, backed by the best possible service. Many years of experience serving a diverse range of industries; from mining, quarrying, mechanical and civil engineering to fishing and farming as well as film and television has made Canning Conveyor Co a leading name throughout the world. It was therefore logical that the company obtained the internationally recognised ISO 9001 standard in providing the evidence to support the company's existing quality management systems.

Working closely with International Management Systems Marketing (IMSM) Canning Conveyor Co successfully achieved the ISO 9001:2000 Certificate in October 2004. Now the company is looking forward to benefiting from the enhanced levels of customer satisfaction that the ISO Quality Management System delivers.

**"ISO9001 should not only add to the trust placed in our products by our customers, but achieving the standard adds to the overall high standards we provide to all our customers throughout our products and services. That includes our current group purchasing contracts that we have with companies such as Tarmac and RMC."**

Managing Director Andrew Canning explained, advising how the business found the ISO certification process.

**"Having a certified system in place certainly improved our confidence in our internal quality and continual improvement systems. With the help of our IMSM Assessor, Geoff Read, implementing the system was accomplished with relative ease and thanks are due to all our dedicated staff in the development and implementation process."**

# CANNINGS BENEFIT FROM NEW INITIATIVES AT RMC



**Supplier review** at the beginning of the year RMC reviewed the range and number of suppliers it uses. This work has been undertaken to consolidate the number of suppliers with whom RMC trades. RMC expects considerable advantages to be delivered to those retained suppliers.

**New supplier website** In February RMC wrote to all suppliers requesting that they visit the RMC supplier website to self maintain key details about their organisation. A main driver for this is the capture of health & safety, environmental and insurance policy details; in addition to general information.

**American Express procurement cards** RMC is currently increasing the use of Amex procurement cards to reduce paperwork and speed payment to retained suppliers.

**Canning Conveyor & RMC** Canning Conveyor is a contracted supplier to RMC for the supply of conveyor components and RMC is

delighted at the positive manner in which Canning has responded to these new initiatives. Jeremy Knew, RMC Regional Procurement Manager said "Canning Conveyor were very quick to identify the benefits offered by both the Amex procurement card and the supplier website, to their own company. As a consequence, they lost no time in signing up to both initiatives."

Jay Canning said, "We are very pleased with the Amex procurement card. It provides an easy way for RMC staff to order from Canning and removes the need for Canning to issue paper invoices. The supplier website provides a central point for Canning to enter its details. These can then be made available to whoever needs them in RMC, without further involvement from ourselves."

Note: RMC was acquired by CEMEX of Mexico on 1st March 2005. For further information visit [www.cemex.com](http://www.cemex.com)

## David Michie Retirement

David Michie retired as a Director and Company Secretary on 30 November 2004 after 27 years service to the company in a variety of financial roles. All employees at the company give appreciation to David for his loyalty and sound council over the years and wished him a long and happy retirement.

Jeremy Hibbert ACA has been appointed to succeed as Chief Financial Officer and Company Secretary.



Jeremy Hibbert together with Andrew Canning presenting David with retirement gifts on behalf of the employees.



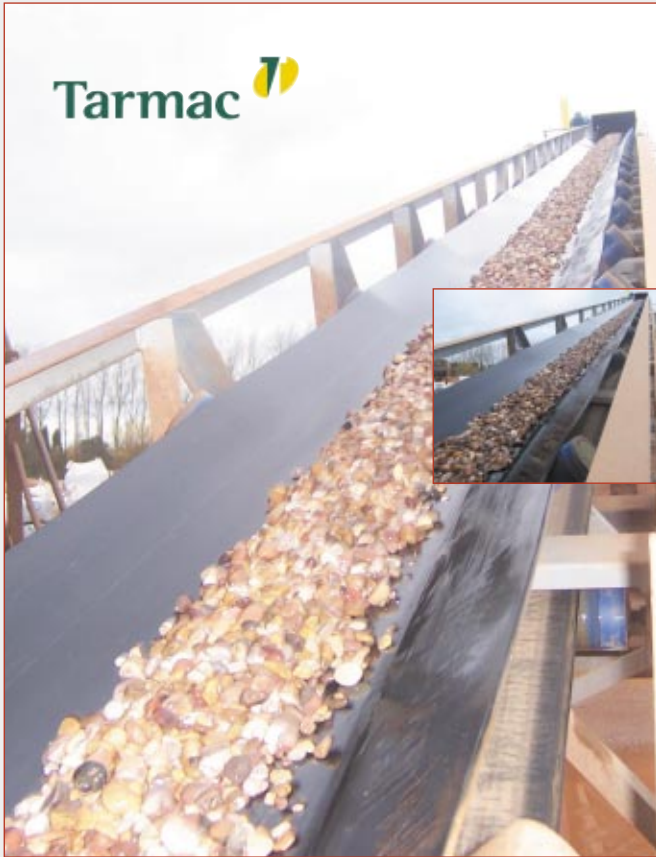
## 25 years service

Andrew Canning presenting Philip with a gift from the company.

Congratulations to Philip Brooks – 25 years service to Canning Conveyor

Philip started at the company on 8th October 1978. Originally one of the main truck drivers Philip has developed within the company and is now fully involved in a range of site work duties and belt works operations.

# CANNING EXCEED EXPECTATIONS



Canning Conveyor have recently supplied a replacement conveyor for Tarmac Midlands at their Meriden Quarry in the West Midlands.

Meriden Quarry is a Sand and Gravel operation, which supplies a local external trade and also a number of internal customers in what is the southern region of Tarmac's Midlands Area. The site profile has increased with the recent substantial capital investment of a Dry Silomate Mortar plant, which supports the on site Mortar and Concrete plants. The sales to these plants and an increasing external market have seen Meriden increase its output by 26% last year.

Canning supplied a new 600mm wide x 25m drum centres inclined troughed belt stockpile conveyor which was designed to replace an existing 500mm wide structurally poor 20mm stone conveyor. The conveyor was of a fabricated lattice frame construction, braced and stiffened as required and the tail end was fitted accordingly to receive



stone from an existing chute. The gantry was fitted with a 750mm wide walkway, full length on one side only and also around the head end according to current health and safety regulations.

The whole project was designed, manufactured and commissioned on site by Canning.

Simon Moroney, QM, commented "Canning went to extra lengths to work around our production times and complied fully with our health and safety standards, actually exceeding expectations on many of the already stringent policies. This was an important aspect when considering the supplier as we currently have a sales profile which includes a number of fixed outlets that could not be quickly transferred to other units. The work performed was commended by all the departments who sign off such capital projects including, Health and Safety, Electrical Engineering and mechanical engineering. We hope to use the philosophy from this project as a model against future work of this nature."

## AGGREGATE INDUSTRIES AWARD SUPPLIER CONTRACT TO CANNING CONVEYOR



Canning Conveyor has been awarded a two-year supplier contract for supply of all belts and rollers (& ancillary goods and services) to the specified requirements of Aggregate Industries UK Ltd which will cover in excess of 300 operational businesses throughout the UK.

The deal provides Aggregate Industries with a national agreement on products, service levels and prices. Canning Conveyors was chosen for the range of products we provide, the service levels offered throughout the UK and the range of value added features and benefits offered to Aggregate Industries.

The contract covers the supply of conveyor belting, which will include the extensive stocks and ranges available of Cannoflex belt – Canning Conveyors own brand of belting as well as rollers, mechanical belt fasteners, belt fitting and on-site vulcanising.

Canning Conveyors will be working closely with our distribution and stock holding associates based throughout the UK, particularly with Olympic Conveyor Services (servicing the Cornwall and Devon areas) within this contract.

A key criteria was our approach to working closely with Aggregate Industries to ensure aims and goals can be met in achieving our mutual business objectives.

It is envisaged that this appointment will be the start of a long service partnership, providing Aggregate Industries with highly competitive costs, whilst at the same time meeting pre-agreed quality and services standards.



## TARMAC DEVELOP eBUSINESS WITH TOP 40 SUPPLIERS.

Canning Conveyor of Worksop is in the lead group of 40 key national suppliers chosen by the Tarmac Group to roll out a new internet based procurement and order management system. The system forms part of Tarmac Group drive to streamline their procurement process and remove unnecessary cost from their supply chain. Quadrem, a global provider of eBusiness Solutions, hosts the system at one of their worldwide server bases. As part of its existing supply contract with Tarmac Group, Canning Conveyor will provide an on-line catalogue of new and second-hand conveyor belting, vulcanising and belt fitting services, rollers and ancillary products such as drums, belt scrapers, drum lagging and fasteners. Tarmac personnel at individual sites will be able to access the on-line catalogue from their desktop computer, select items and place purchase orders on-line at agreed contact prices. Canning Conveyor will then supply the goods and are able to invoice Tarmac on-line, thus amking the whole procurement process as "paper free" as possible.

Canning Conveyor is well chuffed to be in the top 40!!! And particularly pleased to have been invited to join the lead group of Tarmac suppliers as this dovetails with the eBusiness facilities the company is developing for its wider customer base.



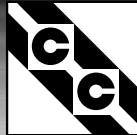
## PLANT/SALES LIST 2005 Issued Spring 2005

All plant and equipment are currently available at the time of print but could be subject to remaining unsold. All prices quoted are in £ pounds sterling, all ex-works basis, or ex-site as stated, exclusive of VAT (value added tax) and exclusive of any packing and carriage.

Please contact us for any other further information/details on sales@canningconveyor.co.uk on any particular item of interest, for photographs, drawings, sketches and any questions/queries you have. We would only be too please to make any arrangements with you for viewing, inspection etc ...

**TELEPHONE 01909 486166**

## CANNOFLEX QUALITIES



**Cannoflex Standard Conveyor Belting** is made with E.P fabric plies. The top and bottom are provided with abrasion resistant rubber covers to DIN 22102 and B.S 490.

### Application

For conveying heavy and sharp edged goods in bulk such as gravel, crushed stone, limestone, iron pellets, glass and coal, also sand, fertilisers etc.

Cannoflex conveyor belts are quality products with an extremely high degree of reliability. The manufacturers have over 60 years of experience in belt production. Extensive testing devices ensure that Cannoflex belts are released only if they are first class from the viewpoint of chemical, technological, structural and manufacturing techniques.

### Carcass

The function of the carcass is to transmit and absorb the forces acting on the belt. It is primarily a question of tensile forces from the driving pulley. Secondly the carcass absorbs the impact that partly appears when the material is loaded onto the conveyor and partly when the belt with material passes over the carrying idlers.

The carcass consists of one or more plies of textile fabric with rubber on each side to give adhesion and flexibility. The longitudinal direction is called warp and cross direction is called weft.

The conveyor belt fabrics can have the same or different material in warp and weft. One letter is designating each, for instance EP, in which E is Polyester in warp and P is Polyamide in weft.

In the following the most common carcass materials are described.

### Cotton (B)

A natural fibre used in both warp and weft. Cotton is still used in conveyor belt fabrics, but it is being displaced by synthetic material.

### Polyester (E)

Synthetic fibres such as Terylene, Trevira, Diolen, and Teton. Polyester fabrics are not influenced by moisture or micro organisms. They are very flexible, have stability in length and are acid resistant.

### Polyamide (P)

Synthetic fibres known as Nylon and Perlon. This fabric has more or less the same characteristics as Polyester, but not the length stability.

### Polyester-Polyamide (EP)

The EP fabrics have Polyester as the warp and Polyamide as the weft. This combination gives the best possible fabric characteristics with the following advantages:

- High strength in proportion to weight
- High resistance to impact
- Negligible elongation
- Great flexibility, excellent trough ability
- Not susceptible to humidity and micro-organisms

These technical advantages as well as many years' experience in the conveyor belt field are the reason why Canning Conveyors prefer EP as carcass material in conveyor belts.

### Covers

The covers protect the carcass and give the necessary friction between belt and driving pulley and between belt and driving pulley and between belt and material.

As the covers must resist influences from the transported material and the weather, cover types that are wear resistant, oil and/or heat resistance, antistatic or the combine two or more of these properties are required.



## NEW CANNOFLEX STANDARD BELTS

PRODUCT REF	SPEC	COVERS MM	BELT TYPE IN STOCK	WIDTH MM	QTY MTRS
808/09/12	EP315/3	3 + 1.5	Cannoflex Belt	300	103.6
246/02/14	EP315/2	3 + 1.0	Cannoflex Belt	350	177
251/06/14	EP315/3	3 + 1.5	Cannoflex Belt	350	178
251/07/14	EP315/3	3 + 1.5	Cannoflex Belt	350	176
947/07/14	EP315/3	3 + 1.5	Cannoflex Belt	350	90
956/01/14	EP500/3	5 + 1.5	Cannoflex Belt	350	120
425/09/16	EP250/2	2 + 1.0	Cannoflex Belt	400	305
425/08/18	EP250/2	2 + 1.0	Cannoflex Belt	450	305
301/04/18	EP315/2	3 + 1.0	Cannoflex Belt	450	177
301/03/18	EP315/2	3 + 1.0	Cannoflex Belt	450	117
405/08/18	EP315/3	3 + 1.5	Cannoflex Belt	450	358
405/04/18	EP315/3	3 + 1.5	Cannoflex Belt	450	247
930/02/18	EP500/3	3 + 1.5	Cannoflex Belt	450	126.5
123/06/18	EP500/3	3 + 1.5	Cannoflex Belt	450	354
172/01/18	EP500/3	5 + 1.5	Cannoflex Belt	450	153.5
415/11/18	EP500/3	5 + 1.5	Cannoflex Belt	450	356
425/10/20	EP250/2	2 + 1.0	Cannoflex Belt	500	305
434/02/20	EP315/2	3 + 1.0	Cannoflex Belt	500	305
405/06/20	EP315/3	3 + 1.5	Cannoflex Belt	500	363
405/02/20	EP315/3	3 + 1.5	Cannoflex Belt	500	281
405/05/20	EP315/3	3 + 1.5	Cannoflex Belt	500	362
405/03/20	EP315/3	3 + 1.5	Cannoflex Belt	500	359
405/01/20	EP500/3	3 + 1.5	Cannoflex Belt	500	310
405/07/20	EP500/3	3 + 1.5	Cannoflex Belt	500	264
315/07/20	EP500/3	5 + 1.5	Cannoflex Belt	500	39.5
409/04/20	EP500/3	5 + 1.5	Cannoflex Belt	500	355
409/05/20	EP500/3	5 + 1.5	Cannoflex Belt	500	355
415/12/20	EP500/3	5 + 1.5	Cannoflex Belt	500	361
332/02/24	EP250/2	2 + 1.0	Cannoflex Belt	600	97
428/03/24	EP315/2	3 + 1.0	Cannoflex Belt	600	178
424/02/24	EP315/3	3 + 1.5	Cannoflex Belt	600	361
367/03/24	EP315/3	3 + 1.5	Cannoflex Belt	600	405
424/01/24	EP315/3	3 + 1.5	Cannoflex Belt	600	363
294/04/24	EP315/3	3 + 1.5	Cannoflex Belt	600	375
415/10/24	EP315/3	3 + 1.5	Cannoflex Belt	600	323
425/07/24	EP500/3	3 + 1.5	Cannoflex Belt	600	409
293/01/24	EP500/3	3 + 1.5	Cannoflex Belt	600	175
428/05/24	EP500/3	5 + 1.5	Cannoflex Belt	600	346
428/04/24	EP500/3	5 + 1.5	Cannoflex Belt	600	354
425/06/24	EP500/3	5 + 1.5	Cannoflex Belt	600	355
425/01/24	EP500/3	5 + 1.5	Cannoflex Belt	600	217
404/14/24	EP630/4	5 + 1.5	Cannoflex Belt	600	325
434/06/24	EP630/4	5 + 1.5	Cannoflex Belt	600	354
336/01/26	EP250/2	2 + 1.0	Cannoflex Belt	650	272.5
301/02/26	EP315/2	3 + 1.0	Cannoflex Belt	650	251
332/04/26	EP315/2	3 + 1.0	Cannoflex Belt	650	179
332/03/26	EP315/2	3 + 1.0	Cannoflex Belt	650	84
293/07/26	EP315/3	3 + 1.5	Cannoflex Belt	650	101
242/03/26	EP315/3	3 + 1.5	Cannoflex Belt	650	313
415/07/26	EP315/3	3 + 1.5	Cannoflex Belt	650	250
415/08/26	EP315/3	3 + 1.5	Cannoflex Belt	650	88
415/09/26	EP315/3	3 + 1.5	Cannoflex Belt	650	346
424/05/26	EP500/3	3 + 1.5	Cannoflex Belt	650	385
434/04/26	EP500/3	5 + 1.5	Cannoflex Belt	650	352
415/03/26	EP500/3	5 + 1.5	Cannoflex Belt	650	354
434/05/26	EP500/3	5 + 1.5	Cannoflex Belt	650	352
415/04/26	EP500/3	5 + 1.5	Cannoflex Belt	650	365
415/02/26	EP500/3	5 + 1.5	Cannoflex Belt	650	255
434/03/26	EP500/3	5 + 1.5	Cannoflex Belt	650	353
440/01/26	EP500/3	5 + 1.5	Cannoflex Belt	650	353
299/06/26	EP500/3	5 + 1.5	Cannoflex Belt	650	83
306/07/26	EP630/4	5 + 1.5	Cannoflex Belt	650	179
306/08/26	EP630/4	5 + 1.5	Cannoflex Belt	650	83.4
434/07/26	EP630/4	5 + 1.5	Cannoflex Belt	650	354
126/01/30	EP250/2	2 + 1.0	Cannoflex Belt	750	174.5
123/02/30	EP315/2	3 + 1.0	Cannoflex Belt	750	232
280/01/30	EP315/3	3 + 1.5	Cannoflex Belt	750	90
405/09/30	EP315/3	3 + 1.5	Cannoflex Belt	750	358
405/10/30	EP315/3	3 + 1.5	Cannoflex Belt	750	358
11726/30	EP400/3	4 + 2.0	Cannoflex Belt	750	202
10915/30	EP500/3	3 + 1.5	Cannoflex Belt	750	263
10914/30	EP500/3	3 + 1.5	Cannoflex Belt	750	151
293/04/30	EP500/3	3 + 1.5	Cannoflex Belt	750	147
293/05/30	EP500/3	3 + 1.5	Cannoflex Belt	750	410
423/06/30	EP500/3	5 + 1.5	Cannoflex Belt	750	356
423/05/30	EP500/3	5 + 1.5	Cannoflex Belt	750	358
423/04/30	EP500/3	5 + 1.5	Cannoflex Belt	750	353
428/06/30	EP500/3	5 + 1.5	Cannoflex Belt	750	354
403/01/30	EP500/3	5 + 1.5	Cannoflex Belt	750	371





## NEW FRICTION BACK CANNOFLEX BELTS

PRODUCT REF	SPEC	COVERS MM	BELT TYPE IN STOCK	WIDTH MM	QTY MTRS
394/04/14	EP250/2	2+ F/B	C/flex Friction Back	350	177.5
394/05/14	EP400/3	3+ F/B	C/flex Friction Back	350	203
402/06/16	EP250/2	2+ F/B	C/flex Friction Back	400	207
402/07/16	EP250/2	2+ F/B	C/flex Friction Back	400	207
402/08/16	EP250/2	2+ F/B	C/flex Friction Back	400	207
340/08/20	EP250/2	2+ F/B	C/flex Friction Back	500	100
340/07/20	EP250/2	2+ F/B	C/flex Friction Back	500	57.5
394/08/20	EP400/3	4+ F/B	C/flex Friction Back	500	203
394/06/24	EP250/2	2+ F/B	C/flex Friction Back	600	81
394/07/24	EP400/3	4+ F/B	C/flex Friction Back	600	192
193/06/26	EP250/2	2+ F/B	C/flex Friction Back	650	94.4
11233/26	EP250/2	2+ F/B	C/flex Friction Back	700	200
10944/30	EP250/2	3+ F/B	C/flex Friction Back	705	38
944/06/30	EP250/2	2+ F/B	C/flex Friction Back	750	84
193/07/32	EP250/2	2+ F/B	C/flex Friction Back	800	69
389/09/32	EP400/3	3+ F/B	C/flex Friction Back	800	200
11342/32	EP400/3	3+ F/B	C/flex Friction Back	800	60
196/03/36	EP250/2	3+ F/B	C/flex Friction Back	900	86.5
212/01/36	EP400/3	3+ F/B	C/flex Friction Back	900	58
212/02/42	EP400/3	3+ F/B	C/flex Friction Back	1050	35
389/02/42	EP400/3	3+ F/B	C/flex Friction Back	1050	200
193/11/48	EP250/2	2+ F/B	C/flex Friction Back	1200	155
196/06/48	EP400/3	3+ F/B	C/flex Friction Back	1200	38.5
11309/54	EP250/2	2+ F/B	C/flex Friction Back	1400	30.4
344/09/63	EP250/2	2+ F/B	C/flex Friction Back	1600	200
344/08/63	EP250/2	2+ F/B	C/flex Friction Back	1600	135
944/09/72	EP250/2	2+ F/B	C/flex Friction Back	1800	74.5
209/09/78	EP400/3	3+ F/B	C/flex Friction Back	2000	91



**1400mm wide chevron with integrally moulded C25 cleats \*soon 1500mm wide!**



**CANNOFLEX CHEVRON BELT**  
Now available in 32mm HIGH CLEATS  
From 600mm – 750mm wide.

## NEW GRIPFACE CANNOFLEX BELTS

PRODUCT REF	SPEC	COVERS MM	BELT TYPE IN STOCK	WIDTH MM	QTY MTRS
6489/10	EP315/3	3+ G/T	Cannoflex Gripface	260	41
238/08/12	EP250/2	3+ G/T	Cannoflex Gripface	300	150
238/03/16	EP250/2	3+ G/T	Cannoflex Gripface	400	103
10447/16	EP400/3	3+ 1.0	Cannoflex Gripface	405	35
11738/18	EP250/2	3+ G/T	Cannoflex Gripface	450	200
033/10/20	EP250/2	2+ G/T	Cannoflex Gripface	500	160
389/04/20	EP250/2	3+ G/T	Cannoflex Gripface	500	200
389/06/20	EP250/2	3+ G/T	Cannoflex Gripface	500	200
10132/24	EP250/2	3+ G/T	Cannoflex Gripface	600	203
238/09/24	EP250/2	3+ G/T	Cannoflex Gripface	600	200
238/06/24	EP250/2	3+ G/T	Cannoflex Gripface	600	144
10131/24	EP250/2	3+ G/T	Cannoflex Gripface	600	202
238/05/24	EP250/2	3+ 1.0	Cannoflex Gripface	600	156.3
033/07/26	EP250/2	2+ G/T	Cannoflex Gripface	650	37
389/01/26	EP250/2	3+ G/T	Cannoflex Gripface	650	200
228/02/26	EP400/3	3+ G/T	Cannoflex Gripface	650	32
215/06/30	EP250/2	3+ G/T	Cannoflex Gripface	750	200
220/04/30	EP250/2	3+ G/T	Cannoflex Gripface	750	32
394/09/36	EP250/2	3+ G/T	Cannoflex Gripface	850	193.8
389/08/36	EP250/2	3+ G/T	Cannoflex Gripface	900	200
389/07/36	EP250/2	3+ G/T	Cannoflex Gripface	900	200
10202/42	EP250/2	3+ 1.0	Cannoflex Gripface	1000	100
10862/42	EP400/3	3+ G/T	Cannoflex Gripface	1000	69.5
215/05/42	EP250/2	3+ G/T	Cannoflex Gripface	1050	51
220/03/42	EP250/2	3+ G/T	Cannoflex Gripface	1050	200
228/01/42	EP400/3	3+ G/T	Cannoflex Gripface	1050	173
238/01/44	EP250/2	3+ G/T	Cannoflex Gripface	1100	151
389/05/48	EP250/2	3+ G/T	Cannoflex Gripface	1200	109
238/04/48	EP250/2	3+ 1.0	Cannoflex Gripface	1200	204
212/14/48	EP400/3	3+ G/T	Cannoflex Gripface	1200	105.5
11755/48	EP400/3	3+ 1.0	Cannoflex Gripface	1210	104
11497/54	EP315/3	4+ G/T	Cannoflex Gripface	1400	95
224/03/60	EP250/2	3+ G/T	Cannoflex Gripface	1500	57.5
221/06/60	EP250/2	3+ G/T	Cannoflex Gripface	1500	201
910/08/60	EP400/3	3+ GT	Cannoflex Gripface	1500	51.8
910/06/63	EP400/3	3+ F/B	Cannoflex Gripface	1600	203
155/01/64	EP250/2	3+ 1.0	Cannoflex Gripface	1600	44
221/05/72	EP250/2	3+ G/T	Cannoflex Gripface	1830	203
204/03/72	EP250/2	3+ G/T	Cannoflex Gripface	1830	97.4
204/01/72	EP250/2	2+ G/T	Cannoflex Gripface	1800	31.5
204/02/72	EP250/2	3+ 1.0	Cannoflex Gripface	1800	196
978/06/72	EP315/3	4+ G/T	Cannoflex Gripface	1800	82.5
302/05/72	EP400/3	3+ 1.0	Cannoflex Gripface	1800	70



**OIL RESISTANT CHEVRON**  
Available in Type C15 and C25 from 600mm – 1050 widths.









## USED CONVEYOR BELTS

PRODUCT REF	TOP MM	BTM MM	THK	PLY	WIDTH MM	QTY MTRS
371/08/42	6	2	13	3	1000	75
328/05/42	5	2	15	3	1000	79.5
208/03/42	5	3	13	4	990	100
387/01/42	4	2	14	4	1000	59
387/02/42	4	2	14	4	1000	156
341/04/42	6	1.5	14	4	1000	40
341/05/42	6	2	14	4	1000	48
341/03/42	6	2	14	4	1000	40
9548/42	5	3	15	4	1000	44.5
098/10/42	6	3	15	4	1000	50
341/06/42	6.5	2	15	4	1000	42
329/02/42	5	3	18	4	1000	74
10187/42	4	1	11	5	990	41
880/06/42	2	1	12	5	1000	41.8
083/05/42	5	2	12	5	1000	49
712/03/42	5	1	14	5	990	69
231/02/42	5	3	17	5	1000	40
345/04/42	9	3	18	5	1000	57
374/08/42	4	2	11	3	1050	108
326/11/42	4	2	11	3	1050	97
326/09/42	4	2	11	3	1050	77
326/10/42	4	2	11	3	1050	97
329/03/42	4	2	11	3	1050	79
326/08/42	3	1.5	12	3	1050	140
326/06/42	3	2	12	3	1050	50
370/04/42	4	2.5	12	3	1050	58.5
296/02/44	5	2	12	3	1120	72
326/12/42	4	3	13	3	1050	194.5
326/04/42	2.5	1.5	9	3	1050	44
400/06/42	4	1	10	4	1030	52
351/01/42	5	1	10	4	1060	81.5
400/04/42	5	1.5	10	4	1030	43
371/05/42	4	1.5	11	4	1050	86
370/08/42	4	1.5	11	4	1050	79
369/07/42	4	2.5	13	4	1050	45
400/01/42	6	2.5	13	4	1040	63.7
374/09/42	5	2	14	4	1050	50
347/08/42	5	2	17	4	1050	98.5
347/09/42	5	3	18	4	1050	57
937/15/42	5	2.5	17	5	1050	75
032/09/42	5	2	19	5	1050	58
848/11/48	2	1.5	10	2	1200	81
030/15/48	4	3	10	2	1210	43
684/12/48	1	1	11	2	1200	43
609/17/48	2	1.5	11	2	1200	59
848/08/48	2	1.5	12	2	1195	54
609/14/48	3	2.5	14	2	1200	40
897/16/48	2.5	2	8	3	1200	71
997/01/48	5	1.5	10	3	1190	63.5
699/12/48	4	2	10	3	1180	41
374/01/48	5	2.5	11	3	1200	42
550/03/48	1.5	1	7	4	1330	40
098/06/48	3.5	2.5	10	4	1200	70.5
376/02/48	4	2	12	4	1160	109
376/03/48	4	2	12	4	1160	49
376/04/48	5	2	12	4	1160	126
376/01/48	5	1.5	12	4	1160	101
376/05/48	5	2	12	4	1160	46
376/06/48	5	2	12	4	1160	100
376/08/48	5	2	12	4	1160	192
376/09/48	5	2	12	4	1160	62
376/11/48	5	2	12	4	1160	123
205/05/48	5	1.5	12	4	1200	43
848/09/54	2	1.5	10	2	1390	49.9
173/03/54	5	2.5	12	4	1400	50.5
559/01/54	5	1.5	12	4	1400	30.5
051/04/54	4	3	13	4	1360	82
366/07/54	10	3	18	4	1400	106
363/04/54	6	3	17	5	1425	53
353/10/60	7	3	15	5	1500	72
353/11/60	7	3	15	5	1500	83
345/03/64	9	3	23	4	1600	48
353/03/64	7	3	15	5	1560	42
335/01/80	6	2.5	13	4	1990	44.2
2563/24	3	2	6	0	S/W	85
8305/42	0	0	17	0	TBA	45.7
8309/42	0	0	17	0	TBA	57.3
894/02/48	1	1	7	0	S/W	70
894/03/48	1	1	7	0	S/W	68
606/04/48	4	3	20	0	S/W	47



## SECONDHAND CONVEYOR BELT



For a quarter of a century Canning Conveyor have been supplying secondhand conveyor belting to the Mining and Quarrying Industries.

Our customers range from the large multi-national mining and quarrying organisations to ready-mixed concrete plants, stone, sand and gravel quarries, mines and screening and crushing operations, shipping wharfs, warehouses and the farming industry. We also export large amounts of belting to our agents and customers throughout the world.

No other company has the facilities and expertise to handle the amount of belting which our company supplies.

All secondhand belts are thoroughly examined by our expert staff - only belts which are sound in strength and show very little wear are supplied as reusable. Belts which do not pass examination are used for making other products.

Our sales staff take pride in their fast, friendly service and have at their fingertips the latest stock position and prices.

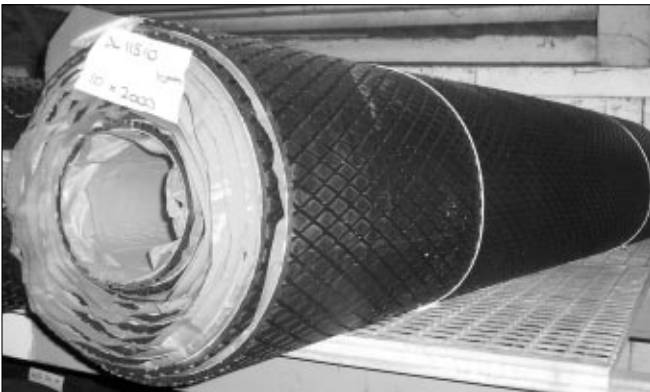


## Belt Services

We can offer:

- On site vulcanising
- On site fitting & clipping
- Belt cutting service
- Vulcanised endless belts
- Custom-made belts to your requirements

## DRUMS/LAGGING

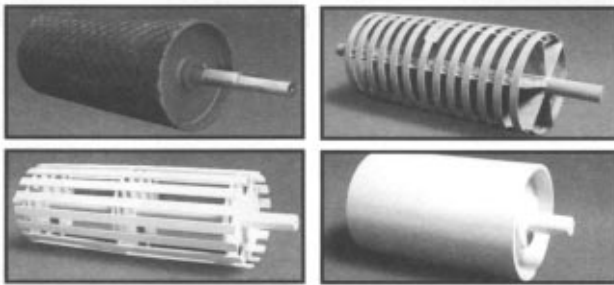


### Drum Lagging Rolls For Sale

Mini-diamond lagging rolls in 8/10 thickness – for cold vulcanising



## CONVEYOR DRUMS Made to Order



### Don't breakdown when your drum goes down

- Heavy duty solid, slatted or spiral drums
- One day delivery on most drums
- Large selection of used and unused drums
- Large stocks of new and used

Telephone **Canning Conveyor**  
For the quickest turnaround



## NEW SLIDE LAG PADS

Standard stock pads  
with 10mm diamond  
rubber in 1800mm  
(6ft) lengths

**SPECIAL  
OFFER**

### ATTENTION: USERS OF JACKSON®, BAT®, STEELACE® FASTENER USERS

FLEXIBLE STEEL LACING COMPANY LTD., THE MANUFACTURER OF ALL OF THE ABOVE BRANDS HAS RECENTLY CONSOLIDATED ALL OF THOSE BRANDS INTO THE FLEXCO® BRAND OF PRODUCTS.



### CANNING CONVEYORS – ARE APPROVED FLEXCO BELT FASTENER SUPPLIERS.

WE ARE NOW STOCKISTS OF THE NEW

**FLEXCO** 190VP™ BOLT SOLID PLATE FASTENERS

CONTACT BELT DEPARTMENT FOR FURTHER DETAILS

WE WILL BE HAPPY TO ASSIST OR ARRANGE SITE VISITS FOR TRAINING & ADVISE FREE OF CHARGE TO USERS OF ANY OF THE DISCONTINUED BRANDS TO FIND THE PROPER FLEXCO REPLACEMENT.

**GIVE US A CALL!**



### PVC BELT FOR SALE

Thin PVC Flooring Belt - 800mm rolls.



## CANNING CONVEYOR BRANCH OUT

UK STOCK HOLDERS • 7 DAY 24 HOUR CALL OUT  
LARGE STOCK AVAILABLE • FITTING & VULCANISING SERVICES

Strathclyde Vulcanising Services  
- Twechar Strathclyde

RTI Conveyor Services - S. Wales

Olympic Conveyor Services - Cornwall

RTI Conveyor Services - London



## NEW RUBBER LAGGING

Variety of rubber lagging offered in plain, diamond cut pattern 8mm/10mm.



'SLIDE LAG PADS' and retainers  
(pads to suit drums dias 10 3/4" to 24" kept in stock)

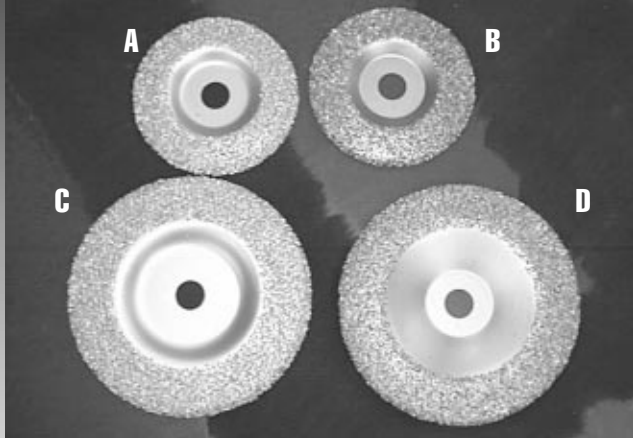
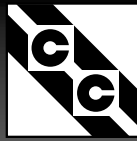


Selection of lagging 'for cold' vulcanising.



## MISCELLANEOUS

### SPECIAL OFFER FLAT BUFFING DISCS



- A - 175Ø PATRIOT CARBIDE £67.00**
- B - 175Ø COPPER CARBIDE £50.00**
- C - 125Ø PATRIOT CARBIDE £47.00**
- D - 175Ø COPPER CARBIDE £33.00**

All discs are 16 grit

These prices supersede all previous prices and are correct as 1 Jan 2005

## USED GEARBOXES

### SHAFT MOUNTED TYPES

#### FENNER TYPE

- Size C : 1 off
- Size D : 3 off x ratio 5:1
- Size E : 8 off x ratio 20:1
- Size F : 7 off x ratio 13:1
- Size G : 3 off x ratio 5:1
- Size H : 6 off x ratio 13:1
- Size J : 2 off x ratio 20:1
- Size S : 1 off x ratio 13:1

#### LERROY SOMER TYPE

- 1 off x PB 2620 x ratio 20:1
- 1 off x PB 2520 x ratio 20:1

#### RENOLD TYPE

- 3 off x SM H6 x ratio 20:1
- 1 off x SM H5 x ratio 20:1

#### WORM REDUCTION GEARBOXES

##### RENOLD TYPE

- 1 off size 8" x ratio 25:1
- 1 off size 8" x ratio 15:1

##### CROFT TYPE

- 1 off size 8" x ratio 30:1
- 1 off size 10" x ratio 30:1

##### RADICON TYPE

- 1 off size 8" x ratio 30:1
- 1 off size 10" x ratio 25:1
- 1 off size 10" x ratio 40:1
- 1 off size 12" x ratio 20:1
- 2 off size 12" x ratio 50:1
- 1 off size 14" x ratio 70:1
- 1 off size 10" x ratio 15:1
- 1 off size 10" x ratio 30:1
- 1 off size 12" x ratio 15:1
- 1 off size 12" x ratio 30:1
- 3 off size 14" x ratio 30:1

##### DAVID BROWN H SERIES

- 1 off size B225 x ratio 13.96:1
- 3 off x size B3280 x ratio 21.26:1

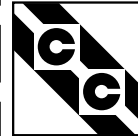
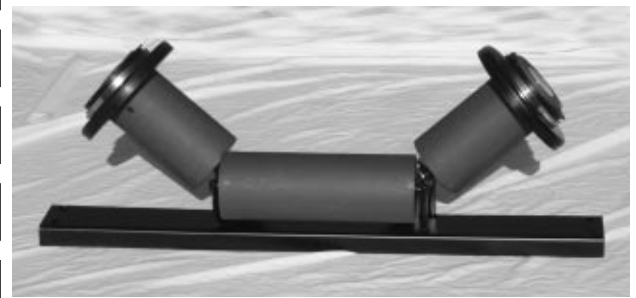
##### A SERIES TYPE

- 1 off size 600 x ratio 30:1
- 1 off size 600 x ratio 70:1

##### HOLROYD TYPE

- 1 off size 6" X ratio 60:1

**PRICE EITHER 'AS IS' OR RECONDITIONED**



### CANNING BELT TRACKING DISC

- *To suit 102mm and 127mm dia rollers*
- *Easy to install*
- *Ex stock availability*
- *Fits standard field conveyor flexing sets and return rollers*
- *Unbeatable prices !!*

**CONTACT 'ROLLER SALES' FOR FURTHER DETAILS**



### LARGE SELECTION IN STOCK



Used Gearboxes, Shaft Mounted Reduction Boxes, Electric Motors, Secondhand & New Conveyor Drums and Bearings.

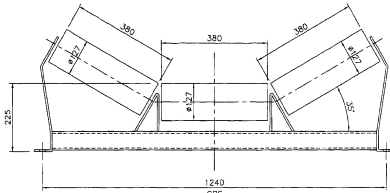
**Contact our sales dept for your individual requirements**



**NEW IDLERS**

**SPECIAL OFFER**

**FRAMES - NEW • ROLLERS - UNUSED**



375 SETS - 900/1000 BELT WIDTH  
SIDE SUPPORTED.  
**AS NEW £36 PER SET**

**JUST IN**

**SUSPENDED HDP IDLER & RETURN ROLLERS**



600mm SETS      750mm SETS  
900mm SETS      1000mm SETS  
**CONTACT OUR ROLLER  
SALES FOR DETAILS**

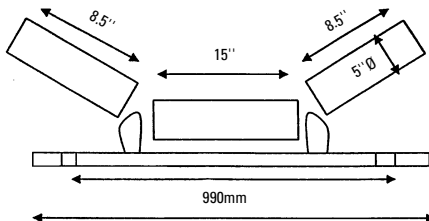
**BEST PRICE AVAILABLE  
CANNING  
HDP TYPE**

**USED IDLERS - UNIVERSAL AD24T Secondhand complete sets (16)off @ £25 per set**

**Anderson Mavor IDLER**

**£28  
PER SET  
SECONDHAND**

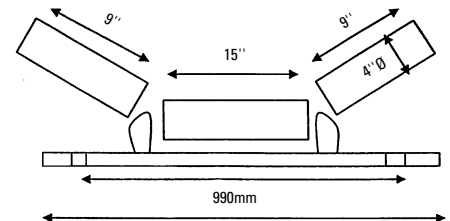
750mm belt width  
30° - 5" dia  
30 sets available



**Anderson Mavor IDLER**

**£28  
PER SET  
SECONDHAND**

750mm belt width  
45° - 4" dia  
50 sets available



**SAFETY FIRST! with Canning**

**FIELD PROVEN TOOLS HELP BOOST PRODUCTIVITY AND SAFEGUARD WORKER HEALTH**

**Far-Pul HD® Belt Clamps lock belts securely in place.**

Avoid the problems and potential dangers associated with homemade devices such as c-clamps, lumber and chains. Instead, do the job right with belt clamps specially engineered for heavy-duty conveyor belt maintenance applications.



**The 840 Series Belt Cutter delivers straighter, faster cuts with unsurpassed safety.**

Utility knives simply can't provide the same level of safety, speed and accuracy when cutting belts. The 840 Series Belt Cutter eliminates the danger of accidental injury that may occur with utility or pocket knives.

**CONTACT BELT DEPARTMENT FOR FURTHER DETAILS**



## USED EQUIPMENT

### 2 off used 750mm x 2.1 mtrs Flat Belt

complete with 7.5kw electric drive - motor/Fenner shaft, mounted gearbox, impact rollers, flanged receiving hopper

Ref-PL9497 ..... As is £1800  
complete with sidewall belt £2,300 each



5 off - Used  
600mm wide  
x 8 mtr  
troughed  
conveyor  
c/w:  
belt/motorised  
drive drum in  
trough press  
frame

Ref-ST101 ..... POA - Ex Site



2 off Used  
1000mm x  
14.8 m  
conveyors,  
c/w drive  
and chevron  
belt

Ref-ST100 ..... POA Ex Site



2 off - Used  
1000mm x  
75m troughed  
conveyors in  
3m sections

Ref-ST102 ..... POA Ex Site



Ref-PL7082 ..... £4,800

### 1 off used 600mm Jib head Drive

single drum  
600mm dia  
drive lagged,  
complete with  
22kw electric  
drive, motor  
/worm box  
/fluid coupling



### FEEDER (3 OFF)

Ref-935  
£2,800 each Ex Site

Size - 2500 x 800mm



### 1 off used troughed belt conveyor 600mm x 40mtrs complete

Walkway one  
side, 11kw  
electric drive,  
support legs and  
access ladder.  
No belting (extra)

Ref-PL8084 ..... POA

## DO YOU HAVE ANY USED EQUIPMENT FOR SALE?

Contact Ian Bennett/Andrew Canning  
Telephone 01909 486166

**USED EQUIPMENT**



**1 off used  
600mm x 32mtrs  
complete**

troughed belt complete with walkway onside comprising 8m head section with 7.5kw electric drive, 12m intermediate and 12m tail sections. No belting (extra)

**Ref-PL9495  
As is £5,500**



**2 off used  
750mm x  
11mtrs Long  
Intermediate  
Lattice  
Sections**

complete with walkway down one side and idlers. No belt.

**Ref-PL7877A/B ..... As is £1,500 each**



**1 off used  
800mm  
x 12mtrs  
Fyson GB  
Shiploader/  
Stockpiler**

complete with PH2 diesel drive, 800mm chevron belt, hand pump for elevation, removable belt covers full length. **Fully refurbished**

**Ref-PL6172 ..... £16,000**



**NIAGARA/SCREEN**

**Ref-932  
£3,250** Ex Site

Size - 2000 x 1000mm  
2 Deck

**1 off used  
750mm x 20mtrs Stockpiler**

adjustable height  
11kw electric drive, plain belt, tow bar, slewing wheels, feedboot

**Ref-PL9514 ..... £13,500**

**1 off used Belt Weigher Assembly  
to suit 800mm wide belt**



**Ref-PL8002 ..... As is £300**

**cc FOR SALE**

**750 WIDE TROUGHED CONVEYOR**

**Ref-PL9975  
£6,500** Ex Site

**6 metres long c/w 7.5kw motor and  
Croft No 6 g/box, belt and skirts.  
Excellent condition**





## USED EQUIPMENT



### 2 OFF USED 450MM X 8M LONG FYSON TROUGHED CHEVRON BELT MOBILE CONVEYOR

In good working order available for purchase or hire and are complete with pneumatic tyred wheels, adjustable angle wheel bogie and tow bar arrangement.



### HEWITT ROBINS SCREEN

3500 X 1400 one deck with rubber mashing including motor & springs

Ref-689

£3,200 Ex Site

### ~~4~~ NOW 3 off (choice) used 600mm Tail units

complete with drum, bearings, feedboot screw tension

Ref-PL8081/8082/8083 ..... £1600 each



## FOR SALE

### ONE FULLY RE-CONDITIONED CRUSHER

"BJD" FLEXTOTH CRUSHER 20" x 16" YEAR 1987  
18.5 KW DRIVE MOTOR . VEE BELT DRIVE  
ALL ON MOUNTING FRAME READY TO GO!

Ref PL9978/9981

£7,500 EX WORKS



### LIEBHERR CONCRETE MIXER

Ref-023

£5,500 Ex Site

DM Ø  
Motor

3100mm x 1000mm  
37kw



### 3 JAW CRUSHERS

Ref 692A One 400 x 250 Krupp DT	£2,800 Ex site
Ref 692B One 600 X 300 Hsm HT	£4.650 Ex site
Ref 692C One 600 x 400 Kleeman ST	£5,400 Ex site



### SCREEN DRUMS (2 OFF)

Ref-875

£4000 each Ex Site

Size - 1000 dia x 3000mm  
mesh 60mm  
including drive motors



**HEIN LEHMANN SCREEN**

Used for fine screening

Ref-432

**REDUCED TO £17,000 Ex Site**

Special screen for sticky material  
 Size 5000 x 2000mm  
 Single deck  
 With chassis and conveyor under screen  
 BW 2000mm x 6500 long



**SIEBTECHNIK SCREEN**

Ref-500

**REDUCED TO £12,000 Ex Site**

Type 2 1/2 Deck  
 Size 6000 x 2000mm  
 Motor 30kw  
 with chassis



**HAVER NIAGARA FEEDER WITH ONE SCREEN DECK**

For screening fine powder

Ref- 685

**£3,800 Ex Site**

Feeder 1250 x 500mm  
 Screen 2000 x 800mm



**SIEBTECHNIK/SCREEN**

Ref-928

**£4,500 Ex Site**

Size - 3000 x 1200mm  
 2 Deck

**1 off used 600mm Jib head drive**

single drum drive  
 complete with 5.5kw electric drive

Ref-PL8080 ..... **£3,000**



**HOPPERS**

5 off available

Ref-304

**REDUCED TO £2,000 each Ex Site**

2 with **Vibrating Tray Feeders**  
 Size 2500mm x 2700mm

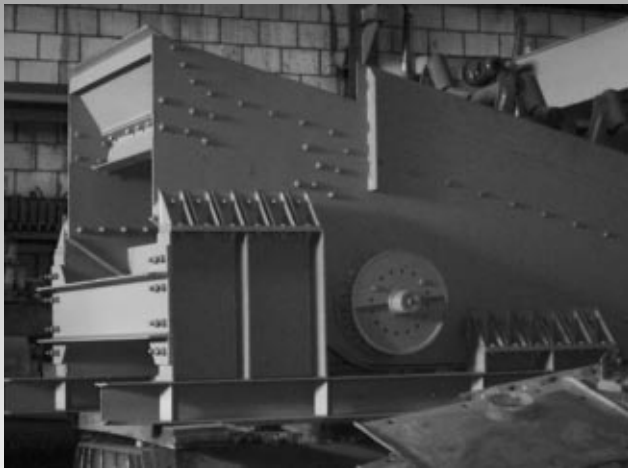
3 with **Small Conveyor**  
 Size 3000 x 3000mm



**S/H 7.5KW DRIVE COMP**

Ref-PL10046  
**£900**

c/w Drive Drum 550 diameter x 800  
 lagged. 7.5kw motor & SMSR 'F' 20  
 Fenner



### HEAVY DUTY SCREEN

Ref-918

**£4,500** Ex Site

Size - 2500 x 1200mm



### SIEBTECHNIK/SCREEN

Ref-930

**£4,500** Ex Site

Size - 4000 x 1200mm  
2.5 Deck



### SCREEN 2 DECK

Ref-860

**£10,000** Ex Site

Size - 1800 x 5000mm  
including frame



### Washing drum including drive unit

Length 6000mm  
Diameter 2200mm  
with rubber on the inside

Ref-051  
**£13,500** Ex Site



### NIAGARA/SCREEN

Ref-931

**£4,500** Ex Site

Size - 4000 x 1200mm  
1 Deck



### USED CONVEYOR BELT WITH STEELCORD

Size - 1200 mm wide x 1200 mtrs

Ref-836

**POA**



## DO YOU HAVE ANY USED EQUIPMENT FOR SALE?

Contact Ian Bennett/Andrew Canning  
Telephone 01909 486166



**2 off used  
800mm x 5mtrs  
- 1 with  
electric drive  
Fyson GB  
Feeders**

with 2.74m wide  
hopper. Petter  
PH1 (8hp)  
diesel drive,  
pneumatic tyre  
wheels, square  
to round chute,  
beltcovers  
drawbar.

Ref-PL6170 ..... £3,200 each



**KRUPP 1 DECK**

Ref-828  
**£4,500** Ex Site

Size - 3500 x 1300mm



**SCREW  
CONVEYOR**

2.8 mtrs x 150mm  
c/w drive

Ref-PL10274  
**£300**



**ALLMINERAAL BY  
SVEDALA  
JIG/BLOWER/SCREEN**

Ref-SP/17  
**£32,250** Ex Site

Type	Alljig 2500 three deck
Size	3000 x 1200mm
Deck	Stainless Nr.1 Dia 12mm Nr.2 Dia 12mm Nr.3 Dia 20mm



**HEAD DRUMS WITH RUBBER LAGGING C/W  
BEARINGS .... LIKE NEW**

950 x 500 - 950 x 600  
Wide selection in stock. Also tail and snub drums  
available.

Ref-694/PL (various)

**CONTACT DRUM SALES FOR LIST/REQUIREMENTS**



**ALLIS-CHALMERS  
SCREEN 2 off available**

Ref-SP/15  
**£8,850** Ex Site

Type	Dewatering screen
Screen surface	6' x 16'
Power Motor	30kw
Screening plate	± 65 x 1mm stainless



### BRAN BACKER RUBBER STAR SCREEN

Ref-621/625  
**£19,500** Ex Site

Length 4000mm  
Width 1250mm  
With mobile length 7200mm belt width 1200mm

### COMPLETE USED CONVEYOR

Ref-PL10439

1-750mm x 21 metres in 2 sections c/w rollers, RSC frame  
Head section c/w 4kw g/motor drive  
406 head and brgs. Tail section c/w tail drum, brgs, feedboot  
**£2,100 without belt £2,500 with plain used belt**



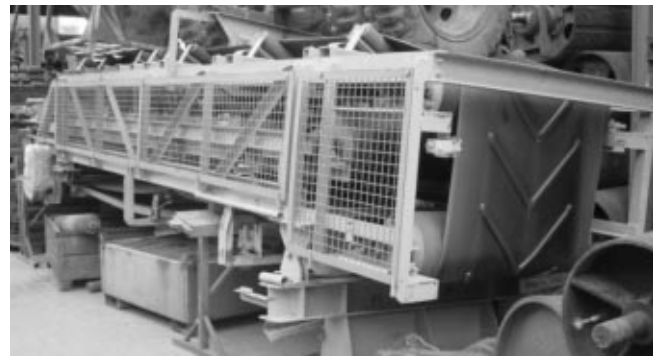
### ALLIS MINERAL-SVEDALA SCREEN

Ref-SP/14  
**REDUCED TO £14,500** Ex Site

Type Lowhead vibrating screen 7' x 20'  
Serie Nr UKO 3955 Double deck  
Power Allis Mineral 5-3 mechanism  
45kw VEM motor

## DO YOU HAVE ANY USED EQUIPMENT FOR SALE?

Contact Ian Bennett/Andrew Canning  
**Telephone 01909 486166**

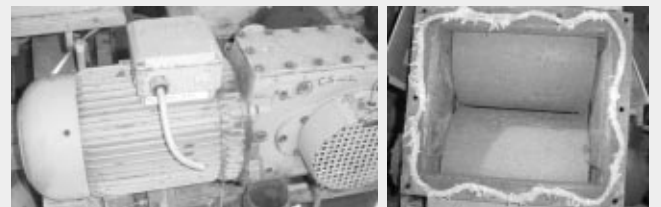


### SHIP LOADING CONVEYOR

VERY GOOD CONDITION

Ref-545  
**£5,400** Ex Site

Construction galvanising UNP 180mm  
Belt 1000mm chevron 16mm high cleats  
Conveyor Ca. 10,000mm long



### CRUSHERS (2 OFF)

Ref-879  
**£3,100 each** Ex Site

With 2 crushing drums  
300 dia x 400 and motor



### PARNABY CYCLONES INTERNATIONAL LTD FILTER PRESS

Ref-SP/19  
**SPECIAL PRICE REDUCED TO £52,750** Ex Site

Type Title arrangement of 3 metre Mark III press  
Capacity 39t/h (dry material)  
Band Upper 13480mm Lower 21380mm  
Motorpower 75kw  
complete with 2 spare belts

**cc FOR SALE**

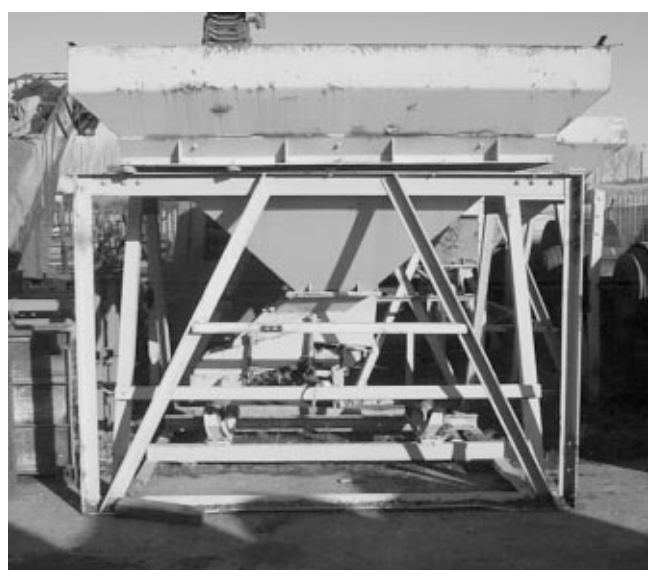
1000mm wide Field Conveyor intermediate sections.  
RSC frame c/w legs to ground – 1000 mtrs  
Disc return rollers/ 3 roll end supported troughing idlers  
**POA**



**1 off used**  
**1050mm x 102mtrs**  
**Complete Field Conveyor**

complete with 30kw drive, loop take-up, jib discharge unit & plain belt

**Designed to handle up to 600tph of - 200mm material**  
Ref-PL6632 ..... **£20,000**



**S/H 9FT SQ HOPPER (1 OFF)**

Ref-PL10184/10185  
**£900**

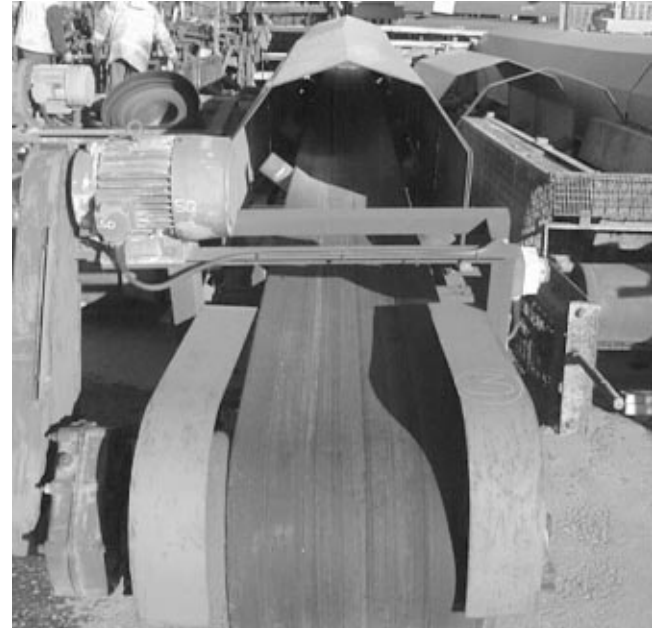
c/w manual gate feed sill



**HEAVY DUTY CONVEYORS / FEEDERS**

Ref-910  
**£4,800** Ex Site

Including motor/gearbox  
Size - 4250 x 800mm



**COMPLETE CONVEYOR**

500 wide x 12 metre long. 890 over structure RSC c/w troughed idlers  
500mm belt c/w Brook Compton motor 5.5kw, 1440 rpm

SMSR TD4 Fenner Head drum 406 diameter Spiral tail drum Belt covers

**READY TO GO !!** Ref-PL10442 **£1,750**

**HOPPER/FEEDER**

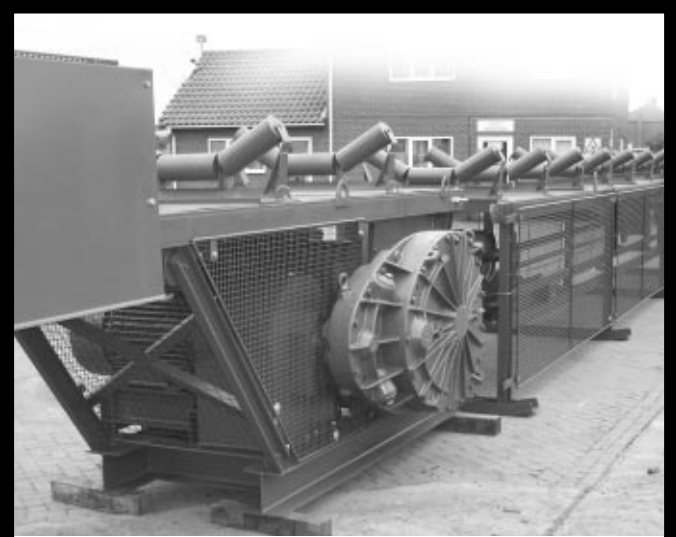
Ref-852  
**£4,900** each Ex Site





### HAND WINCHES FOR LOOP TAKE-UP UNITS

Canning Conveyor Co Ltd range of hand winches, ideal for field conveyor loop take-up units. With a pulling force of up to 3 tonnes, the SW30000 is equipped with a direct drum drive for rapid Two speed winding/unwinding. The winch is constructed with a solid housing and is completely galvanized. The winch is equipped with an automatic radial load pressure brake which holds the load securely and safely in any position. The brake operates in both directions; therefore the rope can be wound from both sides. Noise is kept to a Minimum due to the drum brake; no safety catch. The gear is completely encapsulated. It is equipped with plain bearings requiring no maintenance. The crank is equipped with a turntable handle and can be removed or exchanged in a loaded condition.



### FULLY RECONDITIONED DRIVES & LOOPS AVAILABLE EX-STOCK

**COMPLETE 12 MONTHS FULL WARRANTY**  
**FULLY GUARDED TO BS 7300**

- 24" Single jib drive, 22kw, c/w fully reconditioned 8mtr loop.
- 30" 75kw, fully reconditioned double drive, c/w 10mtr loop.
- 42" FSW Lion 65, double drum drive, 30kw, c/w loop and tail sections and field conveyor. 600 tph capability, previously used on Ladybower reservoir. Fantastic quality.
- 30" Meco loop take up. 2 x 8 ft bays, with hand winch. **£POA**
- 36" Meco double drum drive, c/w 2 x 20" dia. lagged drums motor and CU17" Radicon gearbox. **£POA**
- Meco double drum drive unit and jib section, c/w 2 drive drums each having 30kw/12" Radicon gearbox electric drive. **£POA**
- 30" single Meco jib drive unit, c/w 40 horsepower motor & 10" Radicon gearbox. **£POA**
- 36" Meco loop take up, 3 x 8 ft bays - 24 ft long **£POA**
- PL6106 used 90kw Fletcher Langley, motor frame DW280m, 1420rpm **£POA**
- PL6291 used 55kw GEC motor, D250, 1480rpm **£POA**
- PL6292/3 used 14" worm boxes, Renold, 52:7 R (2 Off) **£POA**
- PL6296 used 17" D Brown worm box, 50:1 R **£POA**

- 4 off - Meco 1050mm 75G Double Drum Drives
- 1 off - FSW 1200mm TB 120 Double Drum Drives
- 2 off - FSW 1050 mm TB 80 Double Drum Drives
- 1 off - FSW 1050mm In Seam Double Drum Drives

We can design and manufacture various drives to suit customer requirements from 600mm – 1500mm wide, in single or double drum on a very quick turnaround. To compliment this we manufacture loop take-up units in various lengths and widths with both GTU towers, hand winches or tail end units with or without impact sections complete with feed boots.

### FIELD CONVEYOR STRUCTURE

#### NEW

- 1000mtr x 750mm wide field conveyor structure, available ex-stock c/w flexing sets and return rollers. **£POA**

#### USED

- 1000mtr x 750mm wide field conveyor structure, available ex-stock c/w flexing sets and return rollers **£POA**
- 1000mtr x 600mm wide field conveyor structure, available ex-stock c/w flexing sets and return rollers **£POA**



## ALSO AVAILABLE

New / Part New / Used & Secondhand

- 600/750/900/1050mm JIB HEAD DRIVE UNITS
- LOOP TAKE UP UNITS
- TAIL UNITS
- INTERMEDIATE SECTIONS/BAYS COMPLETE



### ROLLERS

1000 off – Used Troughing Idlers, 1000mm belt, 3 roll sets, h/duty 127 dia side supported.

**Price £15.00 each.**

500 off – Used Disc Return Rollers 1000mm belt.

**Price £10.00 each.**

# CANNING CONVEYOR NOW OFFER ENVIRONMENTAL SERVICES!

Canning Conveyor can now offer a full 'turnkey' service to all our customers, which incorporates CAD design, manufacture, installation and commissioning.

All our work is fully guaranteed and free site surveys are available.....

## Dust Suppression

There are several existing methods of controlling dust but many are ineffective, costly and have detrimental effects on plant and machinery.

An effective system for the control of fugitive dust in industry should meet the following objectives.

- Must be efficient to meet Health & Safety requirements.
- Be practical and simple in operation.
- Have low initial cost.
- Have low operating costs.
- No adverse effects on product quality or plant and machinery should be created.

**The Ultrasonic Atomising System has therefore been developed in order to meet these requirements and overcome the problems associated with other dust suppression operations.**

The Ultrasonic Atomising System is based on research considering a water droplet, from a spray, that is about to impinge on a dust particle.

If the diameter of the droplet is much greater than the dust particle then the dust particle is simply forced away by the airstream lines around the droplet and little or no contact occurs.

If, on the other hand, the water droplet is of a comparable size to the dust particle then contact occurs as the dust particle attempts to follow the airstream line.

The probability of impaction increases as the size of the water spray droplet decreases.

This explains why conventional hydraulic water sprays are not effective on respirable dust. With typical diameters of 200-600 microns the droplets are much larger than the dusts they are attempting to suppress.

The Ultrasonic Atomising System generates droplets averaging 10 micron in size and is capable of suppressing sub-micron dust particles.

In addition to this particle size theory, the results of additional research indicate there is another significant phenomenon that occurs when Ultrasonic Atomising Systems are applied to dust suppression.

The effect can be compared to an electrostatic precipitator in which dust particles are charged and then collected on plates of opposite charge. It was found that dust particles generally carry certain negative potential depending on the nature of the dust and the ambient conditions.

Water droplets produced by the nozzles carry a charge that is strongly positive in relation to the dust particles.

The result is that the probability of collision between a droplet and particle is greatly increased from the spatial probability, implying the need for fewer water droplets to ensure the desired efficiency.

Thus, a nozzle generating a dense fog of 1-10 micron size droplets can be used to envelop and smother dust particles at their source and prevent them from becoming airborne.

## Design

The Ultrasonic Atomising Nozzle takes the form of a whistle using compressed air which accelerates through a converge section and expands to a diverge section into a resonator chamber. This produces a powerful sonic shockwave.

Water or other liquids delivered to this sonic area are shattered into droplets. Droplets produced by sonic atomisation are small and relatively uniform in size, in the order of 10 micron, with a low mass and low forward velocity.

The nozzles have a large liquid port which are not prone to blockage.

## Application

In practice, the Ultrasonic Atomising System can be utilised in many different industries to provide effective dust suppression.

Wherever there is mechanical handling of any product the system can be incorporated to supply substantial environmental benefits to the process operator.

Examples include conveyor transfer points, crushing or screening equipment and loading/unloading facilities.

Applications where these benefits are of most importance are:-

- The Recycling Industry.
- Foundries.
- Quarries and Mines.
- Incinerators.
- The Woodworking Industry.

Several nozzles at specific locations throughout the plant, individually controlled from a separate control panel, can be used to obtain optimum conditions.

The installation of the Ultrasonic Atomising System is simple and operation is easy.

The system requires only a compressed air and water supply and in many cases a single nozzle may be sufficient.

Other applications include:-

- Humidification.

Particularly in agricultural industries for greenhouses and propagation areas.

- Gas Cooling.

For example in cooling flue gases from furnaces and cement kilns etc.

- Chemical Injection.
- Quenching & Moisturisation.

## Advantages

The advantages of using Ultrasonic Atomising Systems for dust suppression can therefore be summarised as follows:-

- Reduced Health Hazards.
- Decrease in Atmospheric Pollution.
- Improved Working Conditions.
- Efficient Operation With Minimum Use of Water Thus Not Saturating the Product or Plant and Equipment.

Our Ultrasonic Dust Suppression Systems utilise water and compressed air to produce micron sized water droplets from a uniquely designed spray nozzle. The importance of the micron sized water droplet is that it is the same relative size as the respirable dust particle and it therefore attracts the dust and effectively removes it from the ambient air. No free water is produced, which is of particular importance in areas where the product is intolerant to water content.

Larger spray nozzles simply move the dust particles without impacting and create large volumes of free water over the site. Specific applications can be within the roof of a building to suppress dust over the total volume, e.g within a waste transfer station, or at a specific point of dust creation, e.g a conveyor transfer point or product loading hopper.

## Fume & Dust Extraction

Complete air extraction systems can be supplied and installed to eliminate and control workplace fume and dust emissions.

Extraction points can cover a number of areas including:-

- Above specific working areas
- At material loading points / bays
- Within workshops or processing stations

Systems usually incorporate wet or dry filters to regulate emissions to atmosphere within legislative requirements. Fire or explosion relief is built in as required. One specific example is on a skull lancing plant where the fume and dust created from the oxygen cutting of the bottom skulls used in steel production is extracted from within a mobile hood before being passed firstly through a dust and spark arrester and onto a cartridge filter. The total system ensures the protection of the operator and clean air emissions to atmosphere.

## Sound Attenuation

Designed to provide effective noise level reduction from high emitting sources throughout the process plant. Manufactured and installed to meet Health & Safety requirements and to protect the personnel in the vicinity of the noise emitting equipment.

Sound attenuation systems can be supplied in three main areas:-

- Acoustic Booths – To contain noise emissions at source
- Acoustic Barriers – To surround a noise source in order to prevent sound travelling larger distances
- Acoustic Enclosures – To protect personnel inside the enclosure from a noise source outside e.g. Picking Stations



# CANNING CONVEYOR

## HEAVY DUTY POLYMER AND STEEL ROLLERS

Canning have now been producing heavy duty polymer rollers for over five years.

Our new updated rollers and troughing sets brochure, features our range of idlers, rollers and accessories, including full details on field conveyor suspended idlers and returns in high density polymer and steel. Canning's own high density polymer rollers and tracking devices which include the Canning belt tracking disc, belt guide rollers, steering idlers and return rollers are also featured. This brochure will shortly be available and will include our new range of field conveyor rollers with the revolutionary polyhandle.

**Excellent Service** – Our usual excellent service for polymer rollers as well as steel rollers.

**Excellent Delivery** – Extensive quantities of standard conveyor idlers off the shelf for your convenience.

**Best Prices** – We can offer unbeatable prices on polymer and mild steel rollers

Information is available in our brochure, available by post by request or, Visit our web site [www.canningconveyor.co.uk](http://www.canningconveyor.co.uk) and click on rollers for full roller information.



### CANNING IDLERS



Canning idlers are manufactured to the highest quality standards in the UK, to ensure accuracy finish & long life. Deep drawn housings & tube to BS6323 part 1 come together on auto-concentric, double-ended welding machines to give good balance & trueness which in turn permits high speeds without excessive vibration. Zinc plated end caps cover a multi-labyrinth sealing arrangement which protects the precision bearing, and to ensure permanent lubrication a rear seal is fitted encapsulating the grease within the bearing area.

Canning supply idlers to any specification including ISO, BS, NBC, CEMA and DIN and a variety of diameters & lengths. With our replacement idler service we can recognise and cater for all types & sizes available on the market today. Shafts are machined for any fitment.

Transomes are manufactured from mild steel and jog welded for accuracy. All types of variable and fixed angle types are available in many belt widths; 2,3,4, & 5 roll sets can be manufactured to your dimensions. If that which you require is not in plant list, please do not hesitate to contact us to discuss your requirements.



### HIGH DENSITY POLYMER ROLLERS

Unique in Europe  
only by  
**Canning Conveyor**




- Manufactured from HDP ejection
- 8mm wall thickness
- Impact resistant
- Acid resistant
- Heavy Duty high impact performance
- Waterproof and anti-dust patented triple labyrinth seals
- Lightweight - 55% lighter than traditional steel roller
- Low maintenance cost
- Compliant with ISO standards



- Available for variable / fixed angle troughing sets and return idlers
- Costs less than steel
- Ex-stock of standard items
- Specials made to order
- Specification
  - Tube - 102mm dia x 8mm wall thickness
  - 127mm dia x 8mm wall thickness
  - Shaft - Bright drawn mild steel

**TRIED & TESTED**

**CONTACT - SALES FOR BROCHURE**

# HIGH DENSITY POLYMER IS THE FUTURE IN FIELD CONVEYORS!

High density polymer rollers are relatively new to the industry and provide many advantages in their application. The high quality roller shell is manufactured from high density polymer and provides excellent impact resistance, acid resistance, anti-corrosion and anti-alkali in chemical character.

The roller assembly is completed with double cap bearings compliant to ISO standards. Differing from the traditional steel roller the Canning synthetic roller has good impact and instauration. The strengthened frame offers the synthetic roller the same rigidity as a steel roller. Providing triple bearing protection the seal rings prevent water and dust entering the inside of the roller.

Additionally a special catchment groove utilising centrifugal force keeps the inside of the roller dry in all weather conditions. The patented labyrinth seals offer a 45% higher efficiency of preventing water and dust than traditional labyrinths.

Polymer rollers provide greater efficiency in their operation, due to homogeneous mass, good roundness and minimum rolling factor; there is also a subsequent power saving over time due to the significant reduction in amperage.

An additional benefit to any user is the low maintenance cost of the polymer rollers, guaranteed for two years under normal operation no lubrication is required and they are easy to replace and reduce maintenance time to the minimum.

Canning Conveyor have recently been very busy with these products, at **Woodhall Spa Sand and Gravel Quarry, operated by Aggregate Industries UK Ltd**, existing steel rollers have been replaced by new polymer suspended sets and returns on an existing ground conveyor. Alan Smith, Works Manager commented "The polymer rollers are 10 times better than steel. The polymer rollers don't stick, they are lightweight and easy to fit and install – a one man job. Steel rollers took two men to fit. I would recommend them to anyone."

**At Hoveringham Quarry, operated by Tarmac Central**, Canning has supplied several batches of 600/650mm and 750mm wide polymer suspended and return sets.



Luke Brooks, Quarry Manager commented, "The new polymer rollers are a big improvement on the original steel ones. Their lightweight construction and handles have reduced manual handling and trapped finger hazards. We have found them to be quieter and more durable than steel ones, excellent for locations where noise levels are an issue."

**Over at Shepperton, operated by Brett Aggregates** existing steel has been replaced on an existing ground conveyor. Canning supplied 500 – 30" polymer suspended sets and 130 – 30" returns.



**Hanson Aggregates** have also been getting in on the act; their **West Knighton operation** was one of the first to use polymer rollers. Markus Dredge, Quarry Manager commented "Wear rate is excellent in comparison to steel. We have not had a failure in over four years of use."

**At Nettleworth Quarry another Hanson Aggregate operation**, Scott Train, Quarry Manager commented "We originally purchased the polymer rollers due to the rising prices of steel rollers and as a result we have found them an excellent product – they are quieter and durable. A good investment for the future."

## HUGE SAVINGS FOR AGGREGATE COMPANIES!

New Polymer Rollers from Canning Conveyor are supplied are supplied to **Hanson Aggregates, Tarmac, RMC, Brett's, Short Bros, Lafarge** and many others.

# TO RUSSIA FROM CANNING



Canning Conveyor recently completed a conveyor order destined for Russia. The order was for the design, detail manufacture and supply of three conveyors to handle 10 tonne of wood shavings and off cuts based on a

bulk density of 1 tonne/cu.mtr. The order comprised of a 2000mm wide x 11.5m drum centres flat bed belt conveyor designed to operate at 4 metres/min. A second 400mm wide x 37m drum centres troughed belt conveyor designed to operate at 0.35 metres/sec, and a third 400m wide x 6m drum centres troughed belt conveyor designed to operate 0.17 metre/sec.

All three conveyors were fitted with skirts at loading point and are powered via a triplex chain by an appropriate motor. All the conveyors were of stringer construction, braced and stiffened as required with RSA sections. The support heights were based on the position and location of the conveyor provided. Additionally two conveyors were supplied with vulcanised belt and one supplied over length for vulcanising on site.

# ENNSTONE THISTLE CONVEYING NICELY!

Canning Conveyor has recently been involved in a project in Scotland for Ennstone Thistle at their Shierglas Quarry. Situated at Pitlochry, North of Perth the quarry produces 100,000 tonnes/annum and provides limestone material to local markets.

Ennstone Thistle are part of Ennstone plc who are a producer of aggregates, ready mixed concrete, asphalt, natural stone and reconstituted building products.

Canning supplied a 750mm wide x 225m long troughed belt field conveyor which was designed to accept up to 150 tonnes/hr of -65mm aggregates fed by an existing mobile crusher conveyor. The intermediate sections supplied incorporated Canning HDP suspended idler and return rollers. This 225m conveyor runs horizontally before running down hill 20° maximum to the discharge section which consists of a 15m long high level lattice frame structure elevated over the road. This lattice frame structure is



supported by a trestle close to a bank and a tower at the discharge end which incorporates a gravity take up arrangement. The conveyor cantilevers out at the discharge, feeding by a cascade chute onto a radial stockpile conveyor. The cascade chute incorporates a series of crash boxes which reduce the vertical fall onto the radial conveyor. This radial conveyor also supplied by Canning is a 900mm wide x 20m long troughed belt mobile/radial stockpile conveyor. Designed to accept up to 150 tonnes/hr of -65mm stone the conveyor elevates before discharging either into an existing hopper or to stockpile.

The whole project was designed, manufactured, supplied and commissioned by Canning. Duncan Morrison, Quarry Manager, commented "the belt has enabled us to stop the need for dumpers as the quarry is situated on the side of a hill and also to supply a steady feed to the new tertiary system."

# CANNING IMPROVES EFFICIENCY FOR SIMS



In a recent project for the recycling industry, Canning Conveyor has just recently completed a project for Sims Metals.

Sims Metal UK is the country's second largest recycler of ferrous and non-ferrous metals with sales over 2,000,000 tonnes annually. Its national collection infrastructure and processing network offers a total solution for the waste sector, industry and the public community.

Its satellite network of collection and transfer facilities channel scrap metal flows into several world class multi-process hub facilities, strategically located for domestic steel and foundry customers or on dockside facilities, allowing access to near Continental markets as well as deep sea destinations.

The three main recycling processes undertaken by Sims Metal UK are shredding, baling and shearing. Sims Metal UK's five shredders produce approximately 1,000,000 tonnes annually of high quality shredded furnace feed from end of life products, primarily consisting of End of Life Vehicles and Consumer Goods. Its baling operations produce high quality, low residual bundles from new industrial scrap. Its multiple hydraulic shearing capacities produces cut grades from obsolete scrap for the steel and foundry industry.

At the Sims Metal, Long Marston, Stratford on Avon site non ferrous residue is delivered from all the group shredders for dispatch to overseas destinations.

Canning Conveyor were invited to replace an existing arrangement and provide a loading system that would cater for the



different size shipping containers that would be utilised for the transportation of the material.

Canning supplied a new 1200mm wide x 11m approximate drum centres, heavy duty troughed belt loading conveyor. Due to the nature of the application this was constructed of extra heavy duty PFC stringer construction which was designed to accept scrap metal fragments fed onto the conveyor from a hopper/vibrating tray feeder unit.

The conveyor is supported by a fabricated steel tower in the mid section, braced and stiffened and houses the bend drums and the drive drum. The tower is fitted with telescopic legs and two 15 tonne hydraulic rams for the purpose of lifting and lowering the conveyor by 300mm from its maximum to minimum elevations, thus enabling the interface between the different container sizes.

Additionally at the tail end of the conveyor there is a pin connection to ground level to facilitate the hinge mechanism.

In the operation the discharge is directly fed into the rear of a shipping container which is position on a flat bed articulated truck.



## Canning Conveyor

**Canning Conveyor Co. Ltd.** Sandy Lane Industrial Estate, Worksop, Nottinghamshire S80 1TN  
Telephone 01909 486166 Facsimile 01909 500638 Email: sales@canningconveyor.co.uk